

# Look for the truth in Asthma

with the help of allergen specific IgE blood testing

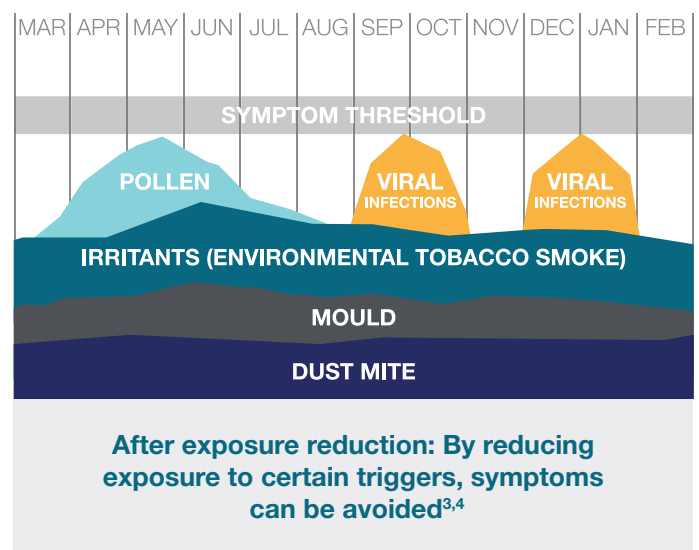
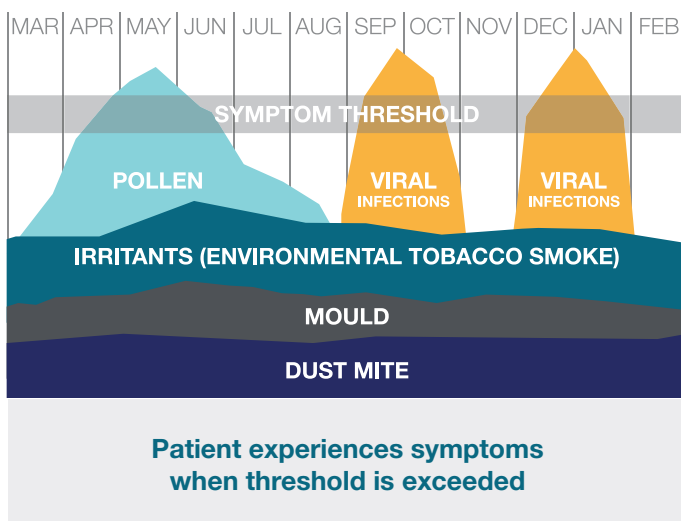
Despite an annual NHS spend of £1 billion on asthma...<sup>1</sup>  
...each year 1500 people still die from it<sup>1\*</sup>

In a detailed review by NRAD of patients who had died from asthma:

**49%** of patients had not had their exacerbation triggers defined/documentated<sup>2</sup>

**Asthma triggers are cumulative<sup>3,4</sup>**  
exposure reduction works to reduce asthma exacerbations<sup>5</sup>

An individual may have a number of triggers (average 3), which combined may lead to symptoms<sup>3,4</sup>

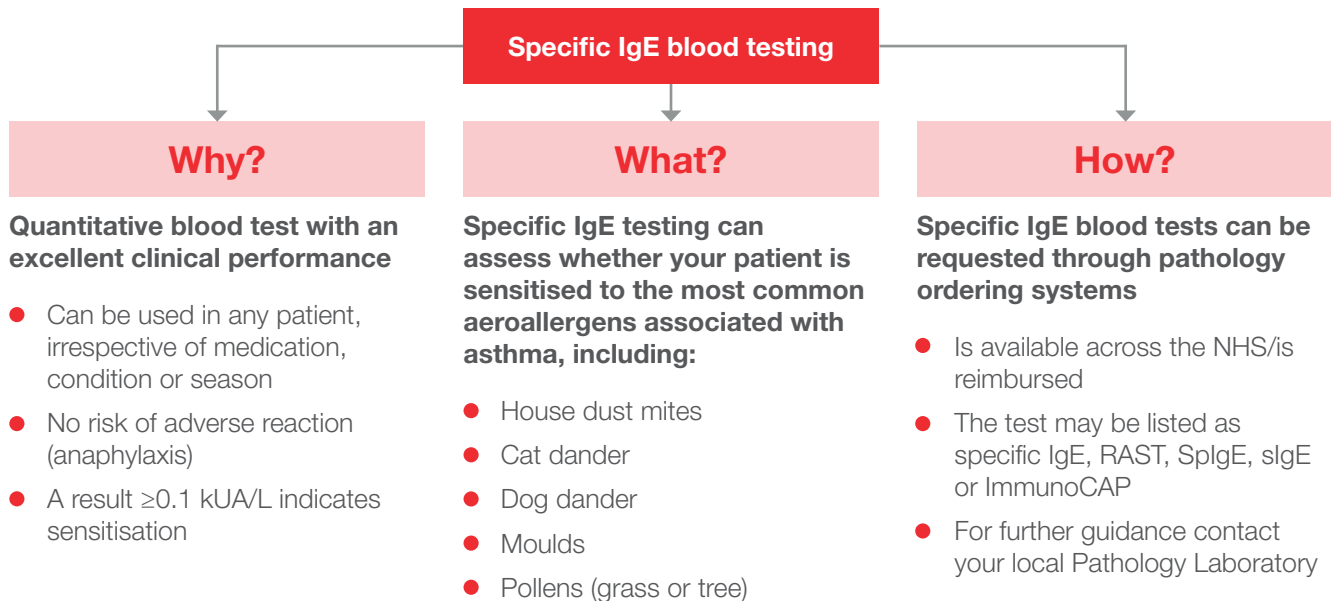


Allergen symptom threshold is the point at which the cumulative allergen load leads to symptoms<sup>4</sup>

Allergens are a major trigger in asthma<sup>6,7</sup>  
Up to **90%** of Children and **60%** of Adults  
with asthma are sensitive to at least one specific allergen<sup>6,7</sup>

\*In 2015 (the most recent data available), 1,468 people died from asthma<sup>2</sup>

A specific IgE blood test can help to confirm a suspected allergy<sup>8</sup>

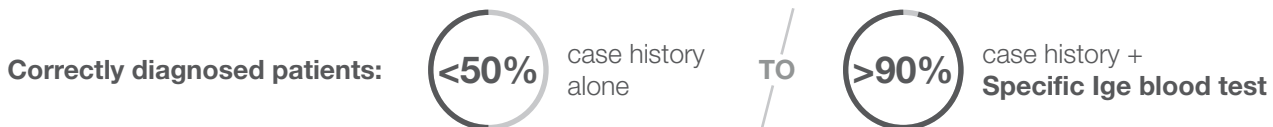


NICE recommends Specific IgE testing after asthma diagnosis is confirmed<sup>9</sup>

Patients with asthma, plus allergy to food, are at an increased risk of fatal anaphylaxis<sup>10</sup>

Specific IgE blood testing could help you help your asthma patients

- ✓ **Reduce asthma symptoms** by identifying and managing allergic triggers<sup>11</sup>
- ✓ Help you **reduce the amount of medication needed and associated costs** by up to **70%**<sup>12</sup>
- ✓ **Reduce risk of hospital admission by 45%** by reducing allergen exposure<sup>5</sup>
- ✓ **Improving the accuracy of your allergy assessment** by testing for allergen sensitisation in addition to patient history<sup>13</sup>



Find out more at [findthetruth.allergyai.com](http://findthetruth.allergyai.com)

© 2019 Thermo Fisher Scientific Inc. All rights reserved.  
All trademarks are the property of Thermo Fisher Scientific and its subsidiaries unless otherwise specified.

REFERENCES

1. Asthma UK. Asthma facts and statistics. <https://www.asthma.org.uk/about/media/facts-and-statistics> [Accessed February 2019].
2. Royal College of Physicians. Why asthma still kills. The National Review of Asthma Deaths (NRAD). May 2014.
3. Eggleston PA. *Immunol Allergy Clin North Am* 2003; 23:533–547.
4. Wickman M. *Allergy* 2005; 60:14–18.
5. Murray CS, et al. *Am J Respir Crit Care Med* 2017; 196:150–158.
6. Host A, Halcken S. *Allergy* 2000; 55:600–608.
7. Allen-Ramey F, et al. *J Am Board Fam Pract* 2005; 18:434–439.
8. NICE Clinical Guideline CG116: Food allergy in under 19s: assessment and diagnosis. February 2011.
9. NICE Guideline NG80: Asthma diagnosis and monitoring of asthma in adults, children and young people. November 2017.
10. Roberts G, et al. *J Allergy Clin Immunol* 2003; 112:168–174.
11. Janson SL, et al. *J Allergy Clin Immunol* 2009; 123:840–6.
12. Zethraeus N, et al. *Ital J Pediatr* 2010; 36:61.
13. Smith HE, et al. *J Allergy Clin Immunol* 2009; 123:646–50.