

Introducing ImmunoCAP™ Can f 4*, Can f 6* and Fel d 7*

Furry Animal Allergy

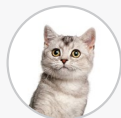
Broadest selection of sIgE tests using allergen components



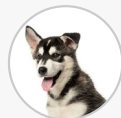
12 selected allergen components helping you improve diagnosis^{1,2}, assess and predict asthma^{2-9,14}, and decide on patient management^{1,2,10,11}

Suggested test profile:

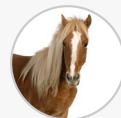
Suspicion of allergy to furry animals



Cat (e1)*



Dog (e5)*



Horse (e3)*

ImmunoCAP Whole allergens

ImmunoCAP Allergen Components

Fel d 1 (Secretoglobin)*
Fel d 2 (Serum albumin)*
Fel d 4, 7 (Lipocalins)*

Can f 1, 2, 4, 6 (Lipocalins)*
Can f 3 (Serum albumin)*
Can f 5 (Kallikrein)*

Equ c 1 (Lipocalin)*
Equ c 3 (Serum albumin)**

Primary sensitization^{1,2}

Fel d 1

Can f 1, 2, 4, 5

Equ c 1

Cross-reactivity^{1,2*}**

Fel d 2 ↔ Can f 3 ↔ Equ c 3**

Fel d 4 ↔ Can f 6 ↔ Equ c 1

Fel d 7 ↔ Can f 1

Asthma severity

Sensitization to ≥ 3 allergen components is more common in severe asthma²⁻⁴

Management/ treatment

Fel d 1: Consider AIT^{2,10#}

Can f1, 2: Consider AIT^{2,11,12#}

Equ c 1: Consider AIT^{13#}

Can f 5 monosensitization:
May tolerate female dogs^{1,2}

*ImmunoCAP Allergen e5, Dog dander; ImmunoCAP Allergen e101, Allergen component rCan f 1 Dog, ImmunoCAP Allergen e102, Allergen component rCan f 2 Dog, ImmunoCAP Allergen e221, Allergen component nCan f 3 Dog serum albumin, ImmunoCAP Allergen e229, Allergen component rCan f 4, Dog, ImmunoCAP Allergen e226, Allergen component rCan f 5, Dog, ImmunoCAP Allergen e230, Allergen component rCan f 6, Dog, ImmunoCAP Allergen e1, Cat dander, ImmunoCAP Allergen e94, Allergen component rFel d 1 Cat, ImmunoCAP Allergen e220, Allergen component rFel d 2 Cat serum albumin, ImmunoCAP Allergen e228, Allergen component rFel d 4, Cat, ImmunoCAP Allergen e231, Allergen component rFel d 7, Cat, ImmunoCAP Allergen e221, Allergen component nCan f 3 Dog serum albumin, ImmunoCAP Allergen e227, Allergen component rEqu c 1, Horse.

**Available on ImmunoCAP™ ISAC sIgE 112 chip.

***When sIgE to two or more cross-reactive components from different species is detected, the highest sIgE level may indicate the primary sensitizer.¹

#Allergen Immunotherapy





A comprehensive test panel of allergen components can help you:

Improve diagnosis

One or several species^{1,2}

Specific sensitization or cross-reactivity^{1,2}

Assess & predict asthma disease

Risk and severity of asthma²⁻⁹

Predict development of asthma^{2,5,14}

Decide on patient management

Avoidance strategies^{1,2}

Allergen immunotherapy^{2,10,11,13}

1. Matricardi P.M et al. *EAACI Molecular Allergy User's Guide* P. M. et al PAI 2016;27 (suppl23): 1-250. 2. Davila I. et al. *Allergy*. 2018 Jun;73(6):1206-1222. 3. Nordlund B et al. *Allergy*;2012;67:661-9. 4. Konradsen JR et al. *Pediatr Allergy Immunol*. 2014;25:187-92. 5. Patelis A et al. *Clin Exp Allergy*. 2016;46:730-40. 6. Käck U. et al. *J Allergy Clin Immunol*. 2018 oct;142(4): 1113-1120. 7. Bjerg A et al. *Pediatr Allergy Immunol*. 2015;26:557-63. 8. Perzanowski M et al. *J Allergy Clin Immunol* 2016;138:1582-90. 9. Grönlund H, et al. *Clin Exp Allergy*. 2008;38:1275-81. 10. Bonnet B. et al. *Allergy Asthma Clin Immunol*. 2018 Apr 10;14:14. 11. Liccardi G et al. *Hum Vaccin Immunother*. 2018 Jun 3;14(6):1438-1441. 12. Curin M. et al. *Int Arch Allergy Immunol*. 2011;154:258-263. 13. Fernandez-Tavora et al. *J Invest Allergol Clin Immunol* 2002,12 (1):29-33. 14. Asarnoj A et al. *J Allergy Clin Immunol*. 2016;137:813-21.

Find out more at thermofisher.com/phadia

64601.AL.GB1.EN.v1.18

© 2018 Thermo Fisher Scientific Inc. All rights reserved.
All trademarks are the property of Thermo Fisher Scientific
and its subsidiaries unless otherwise specified.

Thermo Fisher
SCIENTIFIC